



# Risk Manager

By accessing world-class intelligence, monitoring live-risk maps and providing detailed security briefs, we minimise travel disruption and eliminate the unexpected.

---

**User Guide**



# Risk Manager Trips

- 1 The trips screen displays all upcoming trips for your travellers
- 2 To view more details of a trip please click into the trip name

1

### Trips

Trip dates | All Accounts | Trip ID | Status: All

Creation date ↓	Trip Name	Trip ID	Destinations	Trip dates	Travelers	Account	Status
11-04-2023	Trip to London	JGKJWG	London	25-04-2023 25-04-2023			Draft
05-04-2023	Trip #TNMQMJ	TNMQMJ		Invalid date Invalid date			Draft
05-04-2023	Trip to Copenhagen	SIBHLA	Copenhagen	19-04-2023 19-04-2023			Draft
05-04-2023	Trip to Copenhagen	CQJKWQ	Copenhagen	19-04-2023 21-04-2023			Draft
04-04-2023	Trip #EMMBRH	EMMBRH		Invalid date Invalid date			Draft
04-04-2023	Trip to New York	YMWOQT	New York	04-05-2023 08-05-2023			Draft
03-04-2023	Trip to Sydney City	WIBVHI	Sydney City	21-11-2023 23-11-2023			Draft
03-04-2023	Trip to Sydney City	ZGMSOB	Sydney City	21-11-2023 23-11-2023			Draft
03-04-2023	Trip to Cork	MIZAZP	Cork	17-04-2023 22-04-2023			Draft
31-03-2023	Trip to Copenhagen	WQZTWH	Copenhagen	04-04-2023			Draft

2

### Trip to London

Tuesday, 25th April, 2023 - Tuesday, 25th April, 2023

Travelers: CT

Tuesday, 25th April, 2023

#### Flight to London

Check-in

Norwegian Air Sweden  
DB 3510

Departure: **Copenhagen**  
17:25  
Copenhagen Airport  
Terminal 2

Arrival: **London**  
18:20  
London Gatwick Airport  
Terminal 5

Aircraft: Boeing 737MAX 8 Passenger

Reservation number: N74BX2  
Class: Economy

[Less detail](#)

Export as PDF

Share itinerary

Add to calendar

Download your FREE mobile app

### Contact

Mon to Fri - 6am to 10pm:  
[reservations@bfp.travel](mailto:reservations@bfp.travel)

Out of Hours Team:  
[ooh@bfp.travel](mailto:ooh@bfp.travel)

Mon to Fri - 6am to 10pm:  
+44 20 7870 0010

Out of Hours Team:  
+44 20 7870 0065



# Risk Manager Duty of Care Risk Alerts

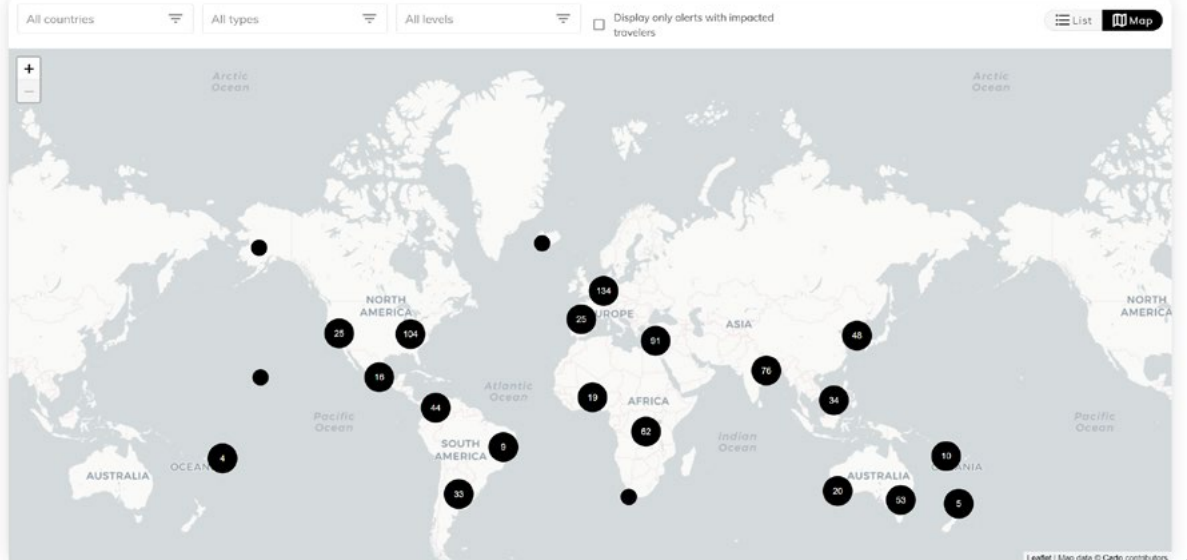
- 1 View of Global Risk Alerts in a list view with the ability to sort and filter to view relevant Risks
- 2 You also have the ability to switch to a map to view the Global Risk Alerts

## Risk Alerts

All countries All types All levels  Display only alerts with impacted travelers List Map

Country	City	Alert	Type	Risk Level	Impacted Travelers	Received	More details
Sweden	Stockholm County	Suspected shooting causes injury in Sodertälje, Stockholm County - Closed	Travel Safety And Disruptions	1	0	30-01-2025 09:47	<a href="#">More details</a>
Italy	Milan, Cuneo	Farmers continue to protest in Milan, across Piedmont - Update	Demonstrations And Unrest	2	0	30-01-2025 09:44	<a href="#">More details</a>
Canada	Toronto	Truck driving into gas line prompts evacuations in Toronto - Closed	Travel Safety And Disruptions	1	0	30-01-2025 09:31	<a href="#">More details</a>
Australia	Melbourne	Warehouse fire disrupts traffic in Moorabbin, Melbourne	Travel Safety And Disruptions	2	0	30-01-2025 09:21	<a href="#">More details</a>
West Bank and Gaza	Tubas	Casualties rise following Israeli strike on Tamoun, Tubas governorate - Update	Conflict And Terrorism	4	0	30-01-2025 09:14	<a href="#">More details</a>
Bangladesh	Dhaka	Students' protest triggers traffic disruptions in Dhaka - Update	Demonstrations And Unrest	2	0	30-01-2025 09:01	<a href="#">More details</a>
Belgium	Brussels	Hundreds of police staff march in Brussels	Demonstrations And Unrest	2	0	30-01-2025 08:57	<a href="#">More details</a>
United States of America	Texas	Adverse weather suspends power supplies in parts of Texas - Update	Natural And Environmental	2	0	30-01-2025 08:57	<a href="#">More details</a>
Greece	Thessaloniki	Protest to be held in Thessaloniki on 1 February	Demonstrations And Unrest	2	0	30-01-2025 08:55	<a href="#">More details</a>
Greece	Larissa	Farmers to rally on 31 January in central Larissa, Thessaly	Demonstrations And Unrest	2	0	30-01-2025 08:54	<a href="#">More details</a>
Democratic Republic of Congo	Kindu	Protest reported underway in Kindu, Maniema province	Demonstrations And Unrest	2	0	30-01-2025 08:54	<a href="#">More details</a>
Germany	Berlin	Hundreds demonstrate in Berlin against stricter immigration policies	Demonstrations And Unrest	2	0	30-01-2025 08:44	<a href="#">More details</a>
Solomon Islands		Officials continue to warn of heavy rainfall in	Natural And Environmental	2	0	30-01-2025 08:34	<a href="#">More details</a>

## Risk Alerts





# Risk Manager Duty of Care Country Risk

- 1 View a countries risk level
- 2 To view more details and a breakdown of the countries risk level please click into Country Details

## Country Profiles

Country	Global Risk Level	Travelers in Country	
Afghanistan	5	0	<a href="#">Country details</a>
Albania	2	0	<a href="#">Country details</a>
Algeria	3	0	<a href="#">Country details</a>
American Samoa	1	0	<a href="#">Country details</a>
Andorra	1	0	<a href="#">Country details</a>
Angola	3	0	<a href="#">Country details</a>
Anguilla	1	0	<a href="#">Country details</a>
Antigua and Barbuda	2	0	<a href="#">Country details</a>
Argentina	2	0	<a href="#">Country details</a>
Armenia	2	0	<a href="#">Country details</a>
Aruba	1	0	<a href="#">Country details</a>
Australia	1	0	<a href="#">Country details</a>
Austria	2	0	<a href="#">Country details</a>
Azerbaijan	2	0	<a href="#">Country details</a>
Bahamas	1	0	<a href="#">Country details</a>

## Country Profiles

Country
Afghanistan
Albania
Algeria
American Samoa
Andorra
Angola
Anguilla
Antigua and Barbuda
Argentina
Armenia
Aruba
Australia
Austria
Azerbaijan
Bahamas
Bahrain
Bangladesh
Barbados
Belarus
Belgium

## Country details

### Afghanistan

Global Risk 5

< **Summary** Political Overview 5 Conflict, Terrorism & Unrest 5 Crime, Law & Corruption 5 Natural 5 >

#### Summary

Afghanistan is an **Extreme Risk** destination: defer non-essential travel.

**Security: Extreme Risk:** Extreme Risk locations are extremely dangerous and present unpredictable security risks. Travel, if possible, is likely to be chaotic.

**COVID-19: Low Risk:** Travellers should take normal precautions when travelling to **Low Risk** locations, which have limited or no restrictions on international travel and domestic activities.

#### Disclaimer

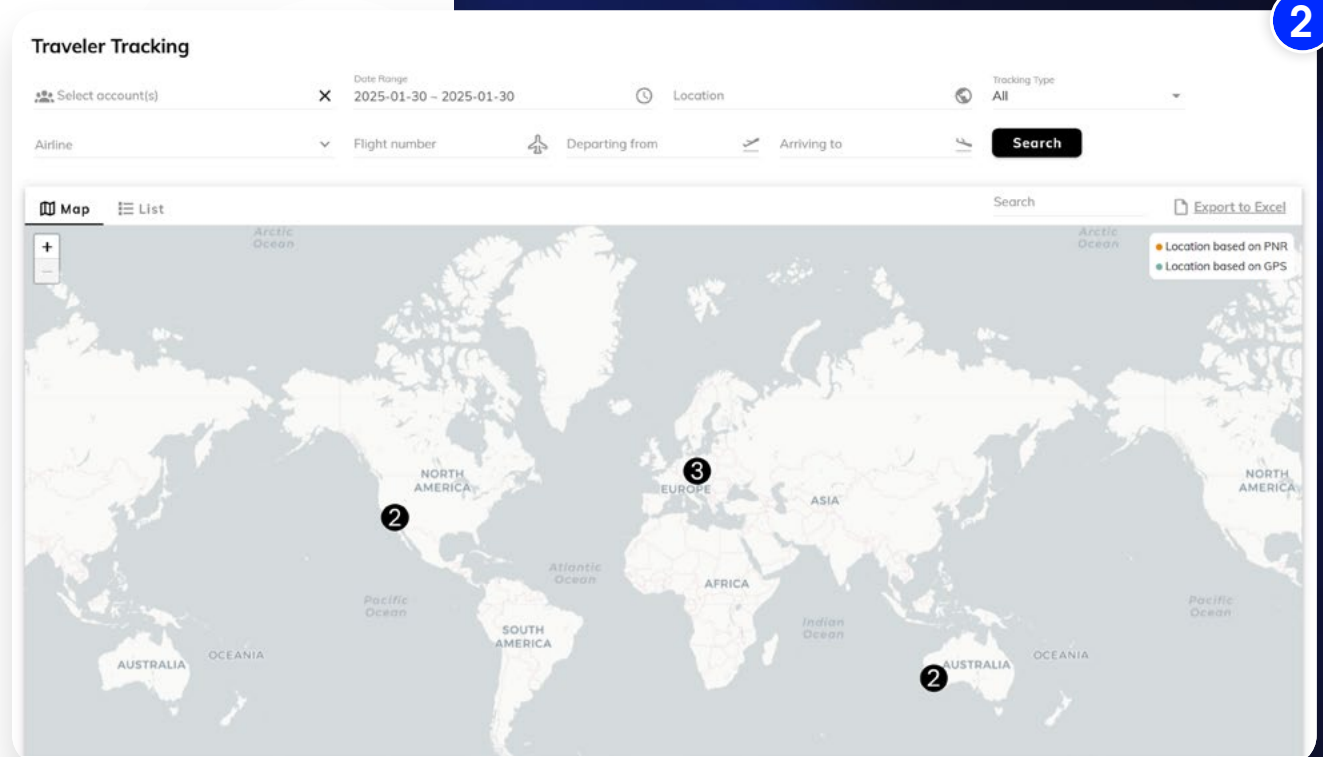
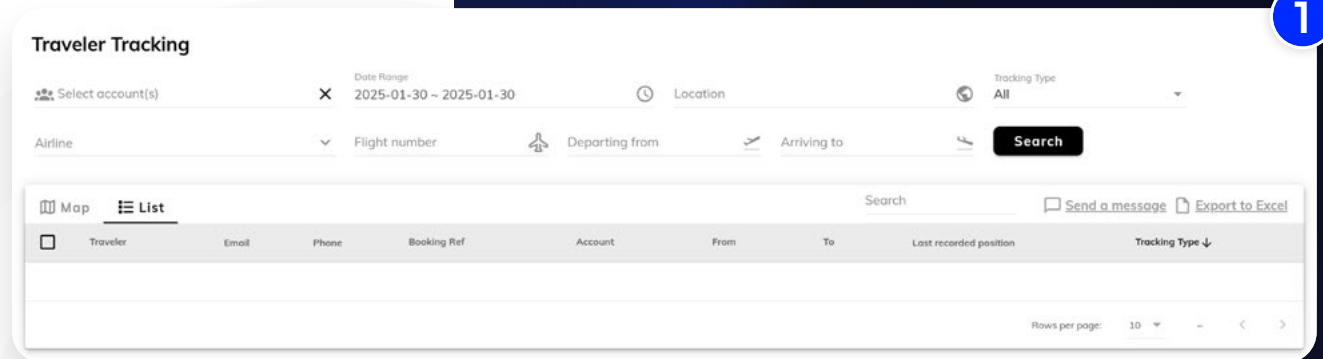
Note that, while every care is taken to provide current, accurate results, none of this content is intended to replace your own risk assessment, official warnings from your national and local government, common sense or general principles of good safety and personal security. You should also follow instructions from airline staff, including at the boarding gates and while disembarking. Further note, that even though there may not be any active alerts for an area, this does not mean that the area is safe, and general safety should always be a concern. The content constitutes a tool to be used for risk management and risk assessment for travellers. Your travel agency and the developer of this application are unable to warrant that information and updates are complete, adequate and error free. Users should always evaluate output and data from service on an individual basis.



# Risk Manager Duty of Care Traveller Tracking

In traveller tracking we provide you with multiple filter options to search for any travellers' trips.

- 1 Ability to track your travellers who are currently travelling in a list view
- 2 You also have the ability to switch to a map view to track your travellers



## MESSAGE CENTER

Send To

Everyone ▼

Trips starting from

Date



Notification Method

Push Notifications

E-mail

Message

Action

Add an action ▼

Next



# Risk Manager Message Centre

In the message centre you are able to send messages via email or direct to the My BFP App for selected travellers or for all travellers. Whether this be a notification of a risk or just something you need to make them aware of for their trip.